

Fact Sheet

AT-A-GLANCE

Albemarle (NYSE:ALB) is a U.S.-based specialty chemicals company that leads the world in transforming essential resources into critical ingredients for mobility, energy, connectivity and health. We are one of the world's largest lithium suppliers and an industry leader in bromine solutions that are essential for advanced manufacturing, national defense and energy security.

Based in Charlotte, N.C., Albemarle serves customers in approximately 70 countries and has the only lithium-producing mine in the U.S., which helps support the development of

a critical domestic supply chain. One of our biggest competitive advantages is our high-quality, low-cost resources – whether that is brine assets in Chile or hard rock assets in Australia – as well as conversion operations and teams of scientists conducting leading edge research that our customers highly value.

As a purpose-driven and values-led organization, we are focused on building a more resilient world, using our core values of care, curiosity, collaboration, humility, accountability and integrity to guide our daily operations and future aspirations.



~8,300
Employees



~1,900
Customers



+1,650
Active Patents

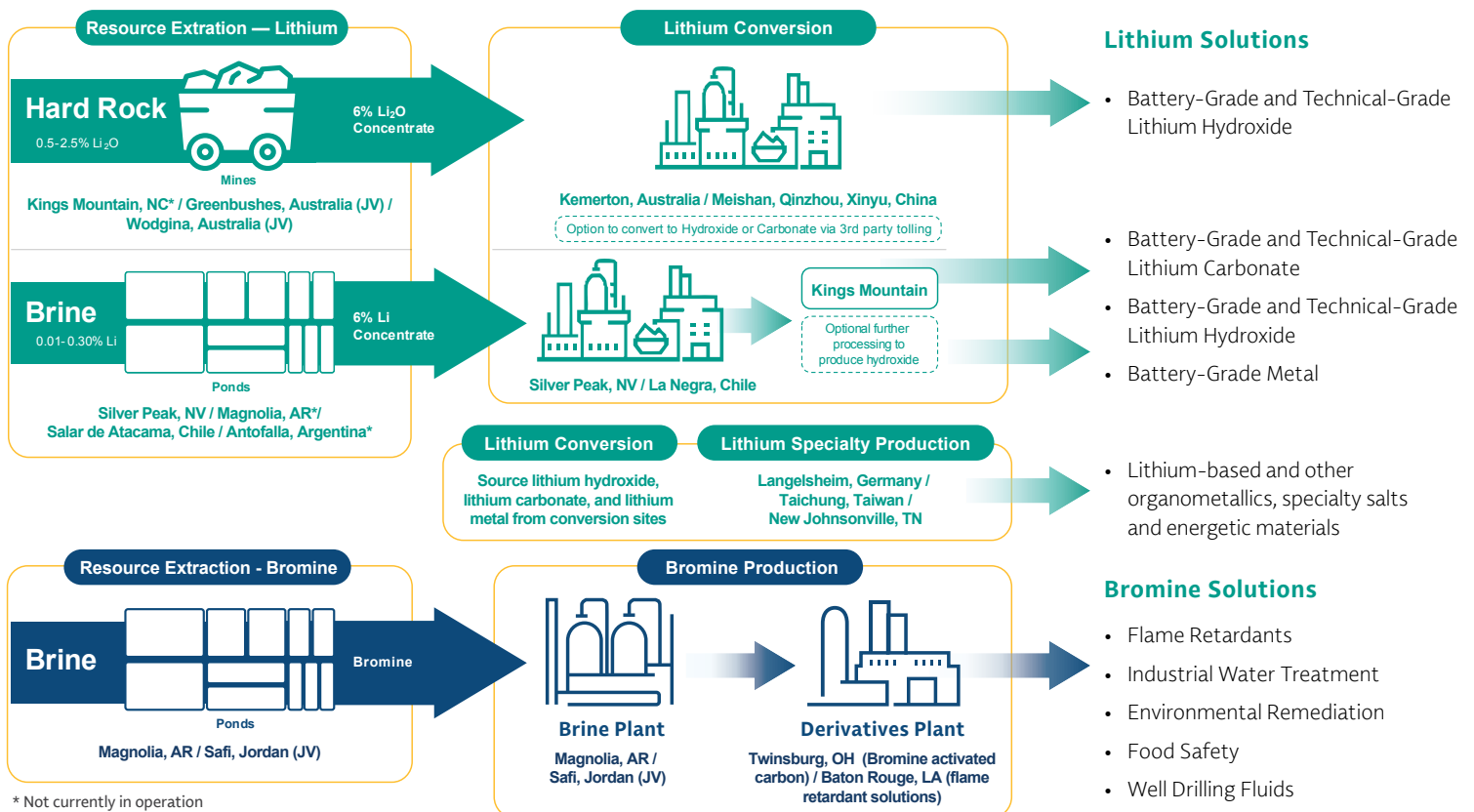


+25
Production
+ R&D Facilities

As of 12/31/2024

FROM RESOURCES—MINE AND BRINE—TO MARKET

Lithium and bromine are extracted as brine or hard rock concentrate at the extraction facilities. These are then further converted into various compounds and products at on-site processing facilities or other conversion facilities owned by Albemarle around the world.



OUR PRODUCTS MOVE, POWER, CONNECT AND PROTECT

Impact	MOBILITY Advancing the future of movement	ENERGY Powering the clean energy transition	CONNECTIVITY Enabling an always-on world	HEALTH Improving quality of life
	Electric Vehicle Batteries Urban Air Mobility Airbag Initiators Circuit Board Coatings & Textiles High Performance Tires	Grid Stability Solar & Wind Power Infrastructure Energy Efficient Homes & Buildings Traditional Energy Drilling & Completions	Fire Safe Electronic Devices Flame Retardants for Appliances Smart Home Wiring & Circuit Board Protection	Pharmaceutical Ingredients & Manufacturing Process Medical Devices & Implants Environmental Remediation Food & Water Safety
Where we show up	Lithium Hydroxide Lithium Carbonate			Cesium Salts Organolithium Elemental Bromine MercLok™ AviBrom® BoviBrom® PorciBrom®
Offerings & Products	Butyllithium Bromine Energetic Materials	Lithium Salts WellBrom®	Butyllithium Hydrogen Bromide	
	SAYTEX® Flame Retardants			
	Lithium Metals			

INNOVATION

Our innovations improve the application, production and safe handling of our lithium and bromine resources. We also drive advancements in adjacent materials and chemistries, propelling our growth while generating better solutions for the customers and industries we serve. We have advanced research and development facilities across the world, including Kings Mountain, North Carolina; Baton Rouge, Louisiana; and Langelsheim, Germany.

AWARDS & RECOGNITION

- The first lithium producer – and only the third mine site globally – to complete an independent audit and have the report published by the Initiative for Responsible Mining Assurance (IRMA).
- A founding member of the International Lithium Association (ILiA), a global trade organization that promotes sustainable and responsible lithium supply while highlighting members' ESG credentials.
- One of about 450 companies worldwide that endorses the United Nations Global Compact CEO Water Mandate.



COMMUNITY GIVING

To date, we have granted approximately \$66.7 million into communities where we live and work.

\$6.8M
Matching Gifts

\$1.9M
Volunteer Grants

\$1.1M
Scholarships

\$56.9M+
Community Giving

As of 12/31/2024

Learn more at [albemarle.com](https://www.albemarle.com)

© 2025 by Albemarle Corporation. All rights reserved. The Albemarle logo, SAYTEX, etc. (all listed) are registered trademarks of Albemarle Corporation.

Albemarle®

03-2025